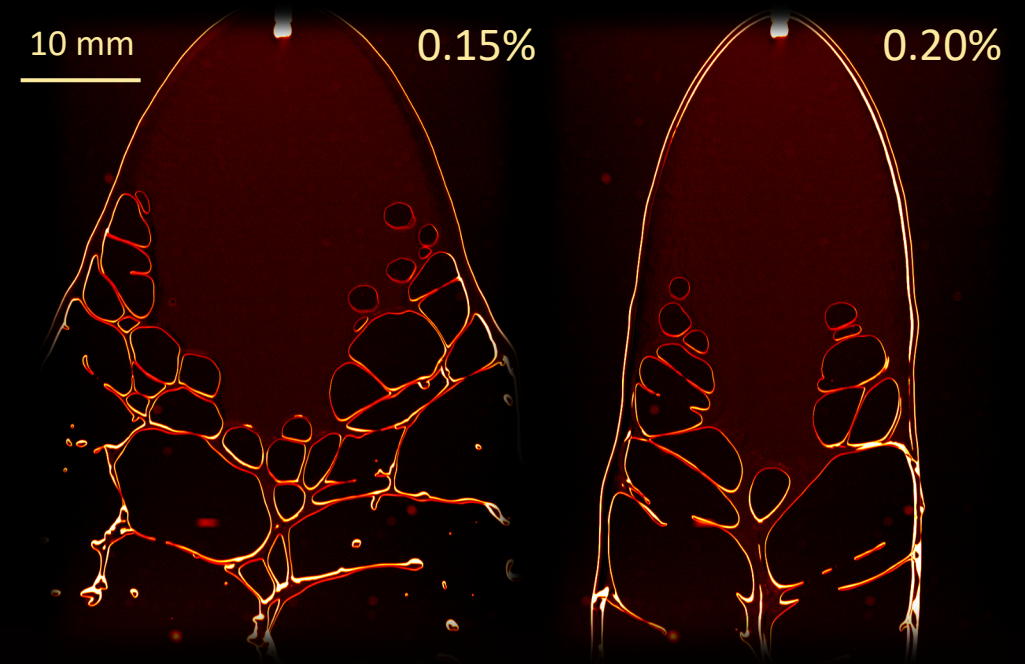


Instabilities in Yield-Stress Fluid Sheets

C. E. Galvin, B. C. Blackwell, M. M. Driscoll – Northwestern University

Fragmentation patterns observed in fluid sheets depend on the rheology of the fluid. We create these sheets via the collision of two fluid jets and study how they break using high-speed imaging.



For Carbopol sheets generated at a given jet velocity, instabilities depend on the concentration (w/w) of polymer.